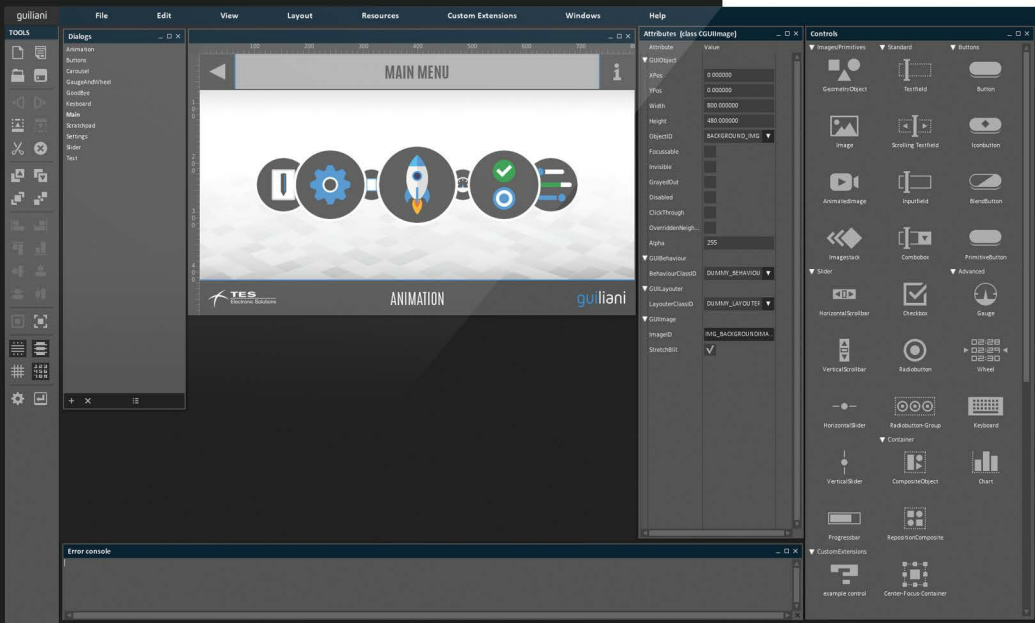
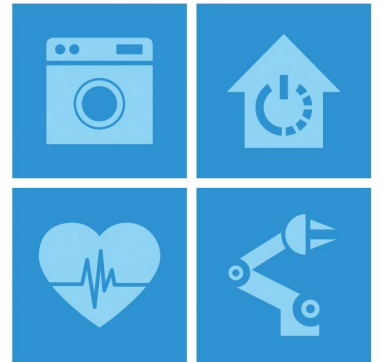


## Graphical User Interface - Light and Innovative with Animations



- White Goods
- Smart Home
- Medical
- Industrial



Create stunning graphical user interfaces for embedded systems within minutes!

**Guiliani is the solution for graphical user interfaces on embedded systems. It combines the comfort of a PC based development tool chain with the benefits of a highly optimized software framework.**

Benefit from a solid software that has been successfully used for more than 10 years, in millions of devices already.

### ■ Features:

- Portability (from no-OS to any-OS, any  $\mu\text{C}$ , 16 bit & higher)
- Designed for embedded applications (low memory and CPU/MCU consumption)
- Optimized redraw strategy to maximize the system performance
- Customizability (tailoring the framework to cover your needs)
- Support of all common font engines (Freetype, Bitmap fonts)
- Independent of Graphics API
- Alpha blending
- Sub-Pixel Accuracy
- Small footprint
- Support of binary or XML-definitions for GUI appearance
- Extendable set of transition and animation effects
- Runtime language switching and Localization (UTF-16 & UTF-8)
- Multi compiler support

# Your GUI is only a few clicks away.

With the Guiliani Streaming Editor (GSE) you can easily design and modify your GUI within a single tool.

A huge list of standard widgets is already included (for example radio buttons, sliders, input fields, etc.) and the list can be extended by your own corporate or customized widgets.



In the market today, products differentiate more and more through their GUI, providing a perfect representation of a company's corporate identity in the design. Guiliani is the solution to achieve that.

Your GUI is developed on a PC and then can be compiled to run on any target device, regardless of hardware and OS platforms.

Suppliers of ODM products can also benefit from Guiliani: Skinning and animation configuration can be achieved very quickly and easily at runtime via XML.

Guiliani offers an excellent total cost of ownership by enabling an efficient development process combined with a flexible business model, at competitive pricing.

## Intuitive, user-friendly framework.

TES Electronic Solutions GmbH  
Ziegelstraße 8  
63065 Offenbach am Main  
Germany  
E-Mail: [info@guiliani.de](mailto:info@guiliani.de)

## Why Guiliani

- Reduced time to market
- Design your GUI once with the GSE, simulate it on PC and deploy it to your target system without any modifications or code writing
- Supports whole platform and product portfolios by highest scalability
- The PC simulation offers a preview of the target device
- Drag and drop feature
- Intuitive GSE workflow enables engineers and designers to create solutions for the target system
- Extend the Editor's functionality with customized widgets, commands and animations
- Reliable and robust tool chain
- The output files can be processed and modified with other applications
- Automatic text length checking (including multi-language support)
- Easily design your buttons, images and other GUI objects
- Written in C++

TES Electronic Solutions GmbH is your end-to-end solution provider for your perfect GUI. TES offers state of the art GUI and graphic software solutions, supporting you in all stages of your application development.